



**ФЕРМЕР САЯПИН**

# The Sayapins' Farm

# The history of the farm



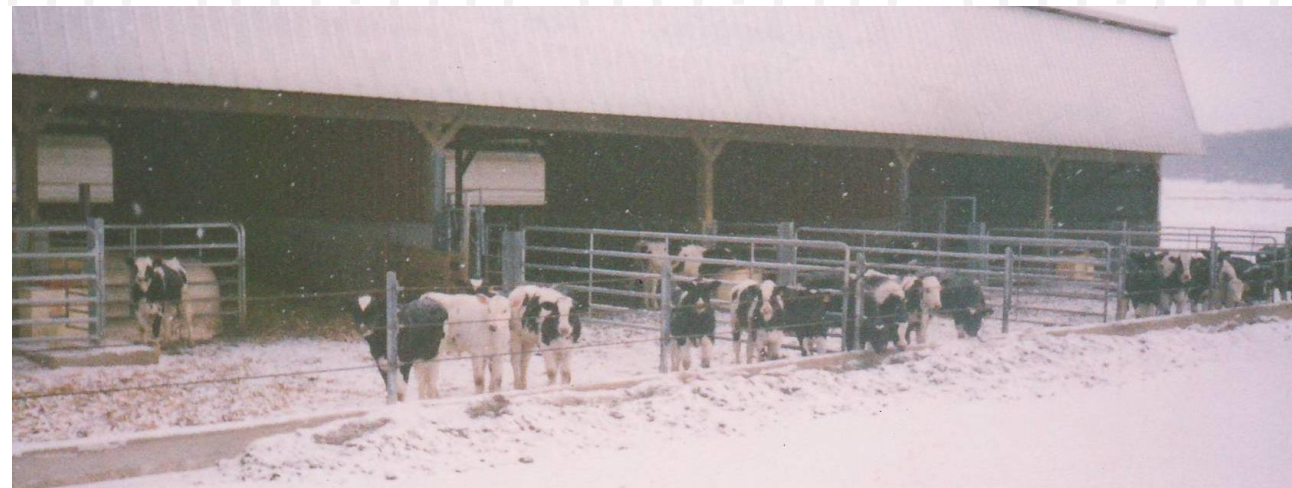
1999



# The history of the farm



# Internship is the USA



# Own production – first steps



# The beginning of the robotic path



2010 Tula region  
October

# Farm creation



**120** Number of cows

**2.5 t**

The volume of milk production per day

**2012**

# The calf house



2014

Kaluga region  
September

# Module for 3 robots



180 Head of cattle

2014 Kaluga region  
September

# Milk room



ФЕРМЕР СЯПИН



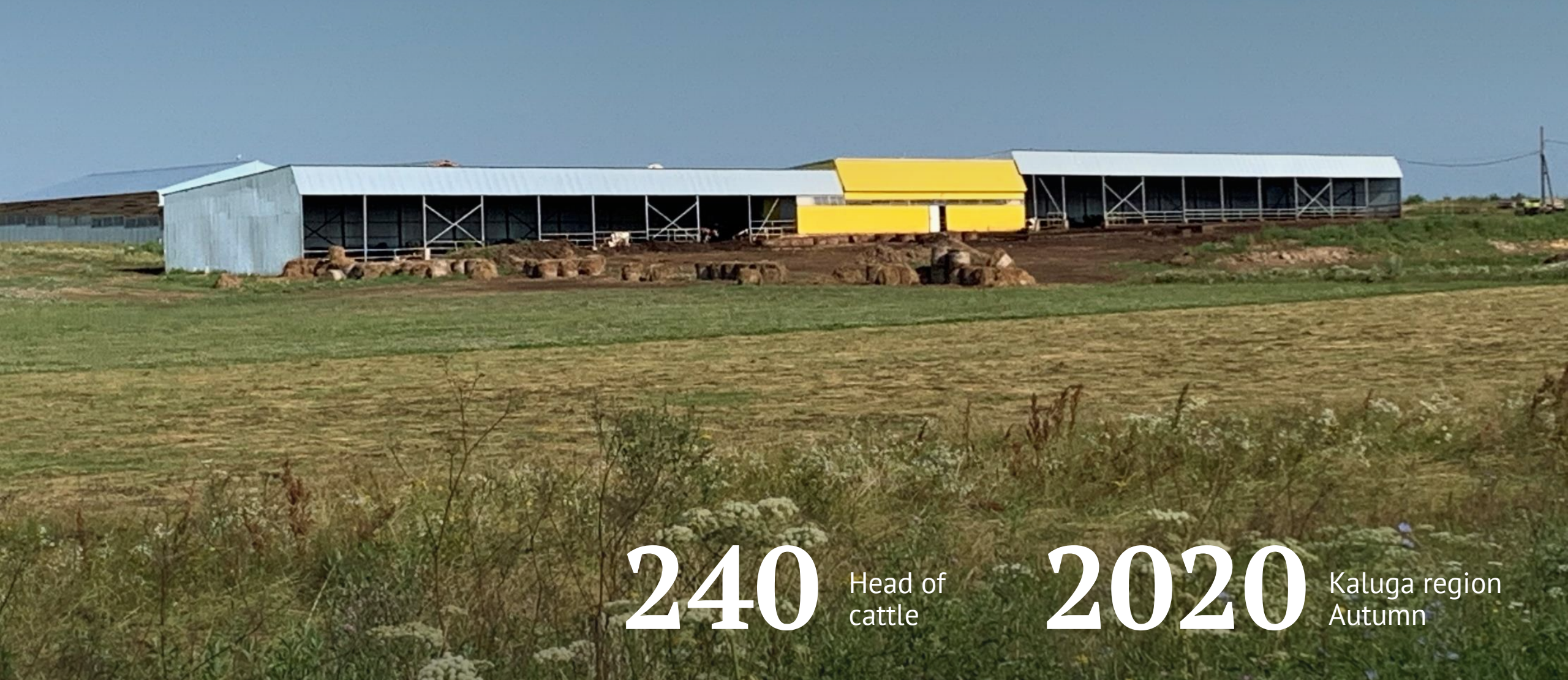
# Module for 4 Lely robots



240 Head of cattle

2015 Kaluga region  
August

# Module for 4 Lely robots



240 Head of  
cattle

2020 Kaluga region  
Autumn

# Brief information about the farm



# 5

Dairy farms, 4 calf houses and 1 feed center

# 2486ha

Arable lands, MTS, own fleet of special agricultural machinery and a mini gas station

The Sayapins' farm is located in **Kaluga region, Mosalsky district, Strelnya village.**

Distance to Kaluga- 82 km,  
to Moscow – 220 km.

The farm specializes in the production of **cow milk.**



# Arrangement and equipment of the farm



The farm is a **small metal hangar**, on both sides of which two canopies made of metal structures for cow keeping are attached.

**The canopies are closed from three sides.** The floors under the canopies are earthen. The area in front of the farm is made of concrete slabs. The farm is adjacent to a fenced area in the field for grazing animals.



# Arrangement and equipment of the farm



A fully automatic robotic system Lely Astronaut is installed inside the milking module – 2 robots on each side of the module. Between them расположены there is an animal treatment area, cooling equipment, water treatment complex, boiler, management office. There are also installed: own water well, feed bins, emergency diesel generator.



**All 4 farms are serviced by one team.**

Warranty service and repair of equipment was previously carried by the supplier company. Now it is an organization founded by a native of that company.

# Keeping and feeding the herd



1650

Heads in the herd,  
**900 of them** —  
cash

Animals live outside all year round. They have free access to food, water and pasture. **They go to milking voluntarily in an individual free schedule.**

One dairy farm can a coup to 250 cash animals. Straw is used as a bedding.

Manure removal is carried out as needed (under canopies once every 3-4 months, under the milking module — +- once every 2 weeks, depending on the weather). Manure is exported and scattered on our own fields.



# Keeping and feeding the herd



Calving mainly happens in the animal treatment area inside the milking module. Calves are transported to the calf house #1, where they grow **up to 4 months**.



Then the animals move to calf house #3 and #4, where they grow up to the age of **13-14 months** and move to calf house #4, where they are inseminated and live **up to 6-7 months of pregnancy**, from where they are then transferred to the main herd, accustomed to robots and live the rest of their lives.

# About the team



35

Number of farm employees

35-150k

Salary per month

Most of them are local, but there are also invitees from various regions of Russia and neighboring countries. Workers are provided with **working transport, a warm canteen with necessary appliances**. People complete many different tasks, but still can replace one another. **6-8 livestock breeders work per shift** for the whole livestock. Such a small number of people is achieved by maximum of automation of production.

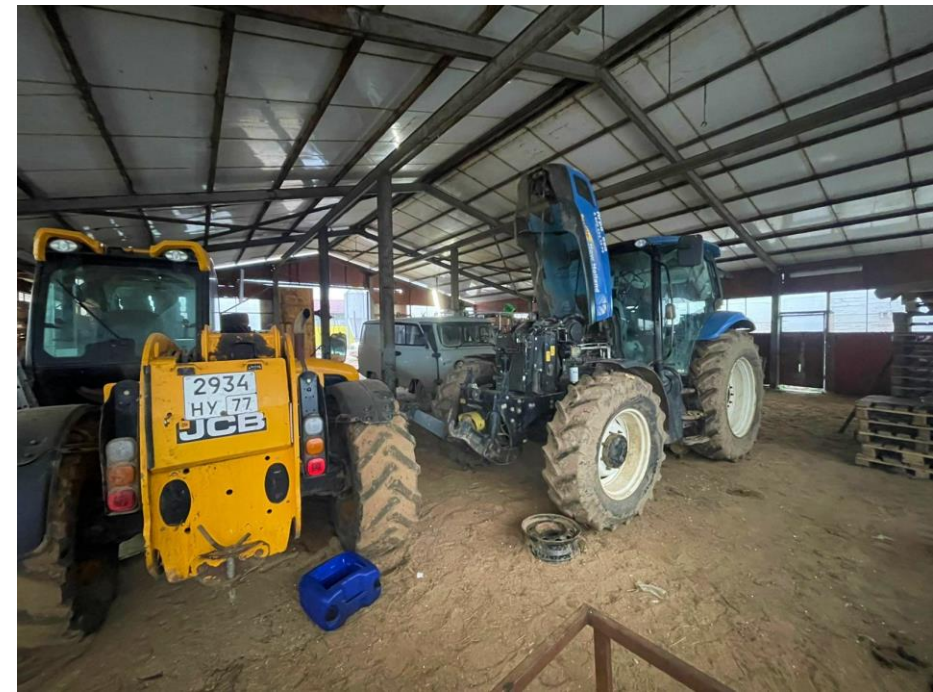
# Agricultural machinery, MTS



The farm has agricultural machinery of imported and domestic production – **tractors, feed mixers, loaders, trailers and attachments, cars and trucks etc.**

Maintenance is carried out on its own and with involvement of the service department. Hired equipment is also involved.

Repair and maintenance of equipment, storage of spare parts and tools is carried out **on own MTS.**



# Land



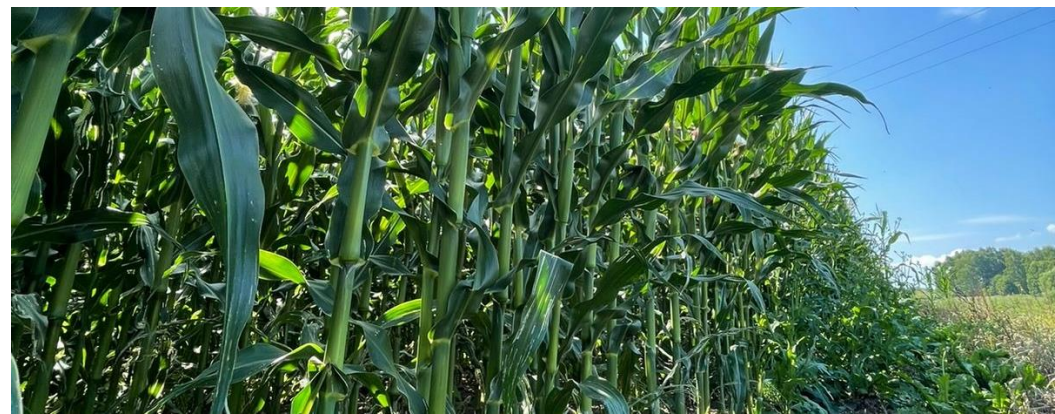
# 2486ha

Total area, 400  
ha – pastures.

In 2023 **400 ha of corn, 400 ha of grass and 300 ha of grain were sown.** The rest of the land is being put into cultivation, because it was acquired in an unsustainable condition (there were bushes and trees).

Haylage, hay and straw are harvested on our own. A Russian-made combine harvester was purchased for harvesting corn silage in 2023. Before that, a hired crew was involved.

If possible, feed is stored near the feed center.

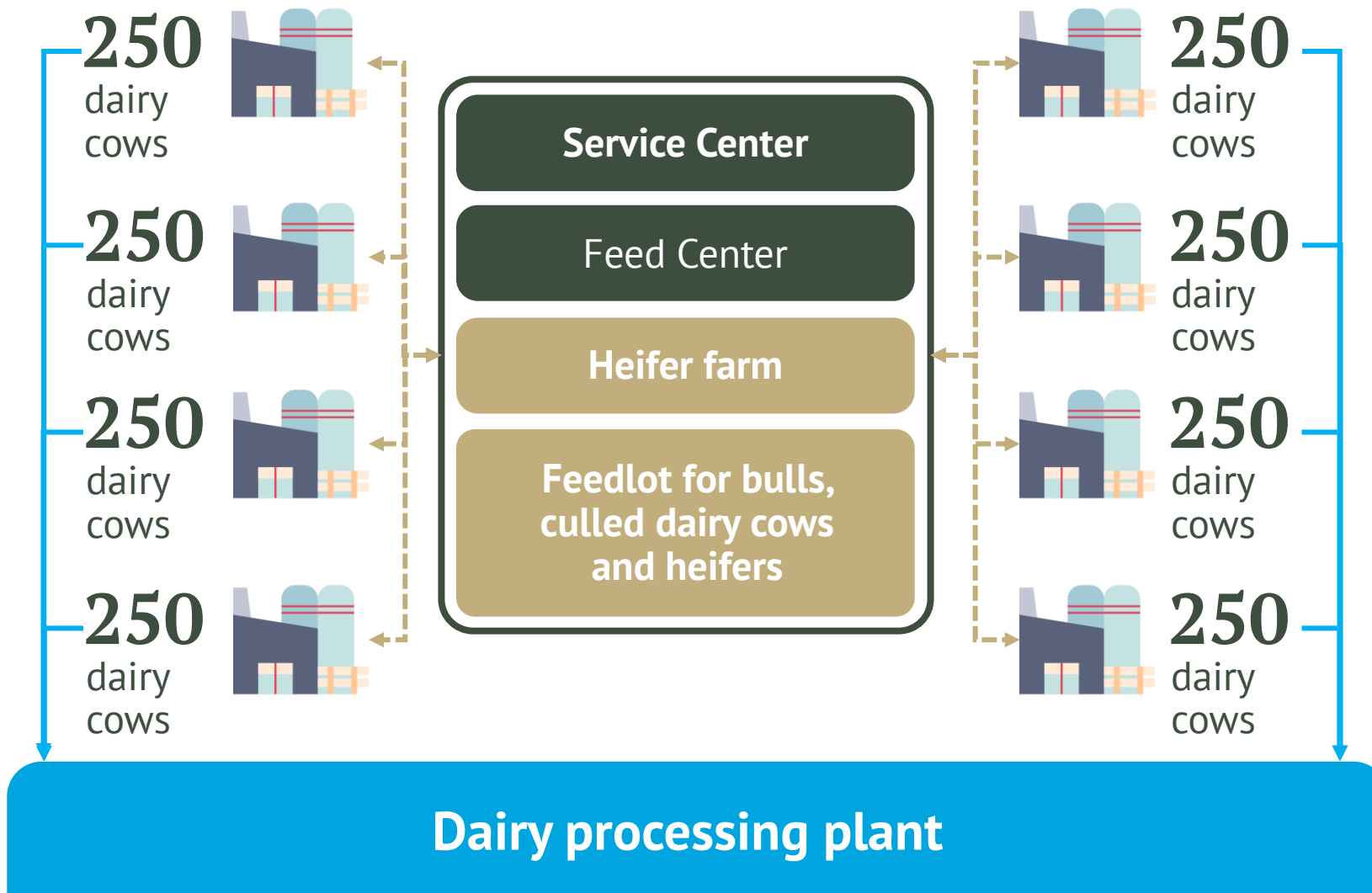


# Feed center



In 2022, the feed center was built, it is a canopy made of metal structures, inside divided into sections for ingredients for the diet. **In October 2022 the feed centers was put into operation.** Until that time, the feed mixture was bought and delivered on a daily basis.

# Cluster concept



A cluster may include farms with dairy cattle of Holstein and other cattle breeds for production of a wide range of dairy products.

A cluster can be created either only from small family farms, or with the involvement of one or two large farms in it.

# We are ready to answer all your questions and are open to cooperation



**ФЕРМЕР СЯПИН**

**vCard**



You can find us in **social media**:



[www.sayapinmilk.ru](http://www.sayapinmilk.ru)



<https://instagram.com/strelnyafarm>



<https://vk.com/sayapinmilk>

**Website**

