





**SOMMET  
DE L'ÉLEVAGE**

# EUROPE'S N°1 LIVESTOCK SHOW

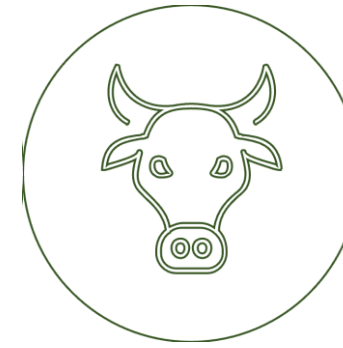
1 - 4 October 2024 Clermont-Ferrand, France



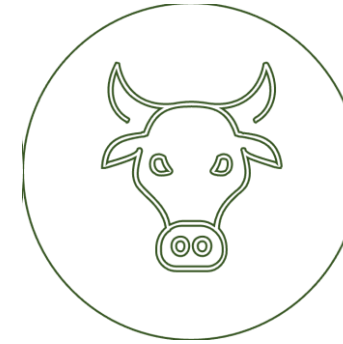
**Süleyman Bezirgan - Türkiye Representative**

# France

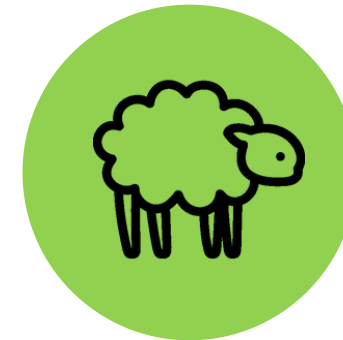
## One of the world's leading livestock nations



#1 in Europe for **beef cattle**



#2 in Europe for **dairy cattle**



Substantial **sheep** flock



Breeders' good technical expertise



Genetic quality and health of herds & flocks



**SOMMET  
DE L'ÉLEVAGE**

**Clermont-Ferrand**  
In the heart of the  
Massif central,  
Europe's largest  
grassland area



# The Massif central

## One of Europe's largest ruminant breeding areas



70% of the land is permanent pasture

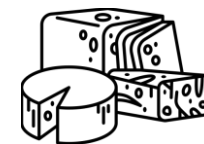
**A sustainable, grass-fed breeding system par excellence**

-Grass-based ration

- Feed & forage self-sufficiency
- Preservation of the environment



**The heartland of many major international breeds**  
(Charolais, Limousin, Salers, Aubrac)



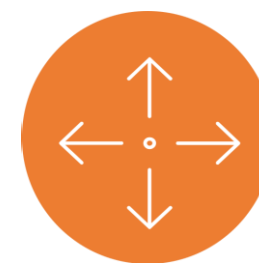
**Cheese board** (mountain dairy breeds) / On-farm processing



**SOMMET  
DE L'ÉLEVAGE**



## The **SOMMET** in figures:



**220,000 m<sup>2</sup>** of total show area space



**95,000 m<sup>2</sup>** of net stand space  
(of which 25% inside / 75% outside)



**1,700** exhibitors  
(of which 320 foreign exhibitors from 34 countries)



**2,000** livestock on show  
representing **70 breeds**



**115,000** trade visitors  
(of which **5,000** are foreign visitors from 90 countries)



**140** conferences & symposiums



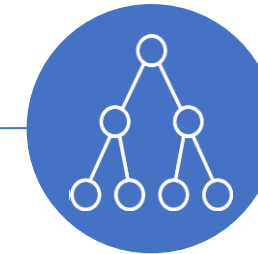
# The exhibitors

## Their business sectors



### A major business event for agricultural equipment & supplies

All the major French and European  
manufacturers are present



### A complete range for all livestock sectors

- Livestock genetics
- Dairy equipment
- Animal nutrition & health
- Livestock equipment
- Farm machinery
- New & renewable energies  
(solar & biogas)



### Technical innovation competition

The SOMMETS D'OR

*SOMMETS D'OR*  
**SOMMETS**



# Livestock judging: The heart of our event

**2,000 heads** of high genetic value



21 horse  
breeds  
300 animals



23 cattle breeds  
1,300 animals

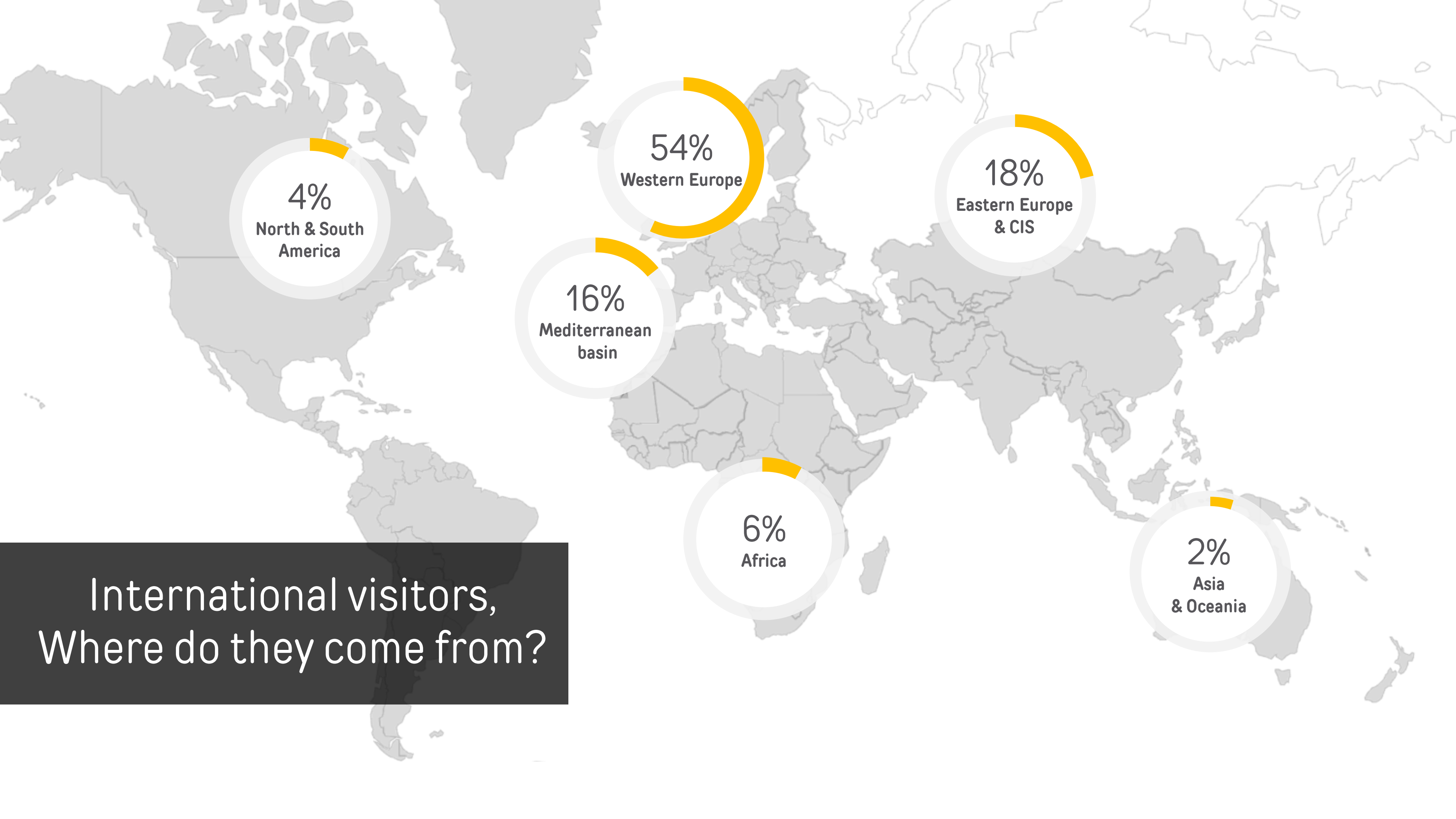


26 sheep  
breeds  
400 animals





A VIP welcome for our international visitors



4%  
North & South  
America

54%  
Western Europe

18%  
Eastern Europe  
& CIS

16%  
Mediterranean  
basin

6%  
Africa

2%  
Asia  
& Oceania

International visitors,  
Where do they come from?

# INTERNATIONAL LOUNGE

Set up in the prestigious Zenith d'Auvergne Hall

## Available stands

MEDEFI, BUSINESS FRANCE,  
FRANCE GENETIQUE ELEVAGE  
/ BCTI



## VIP welcome

Possibility of meetings with our exhibitors or with agricultural experts from abroad. Advice and a personal welcome.



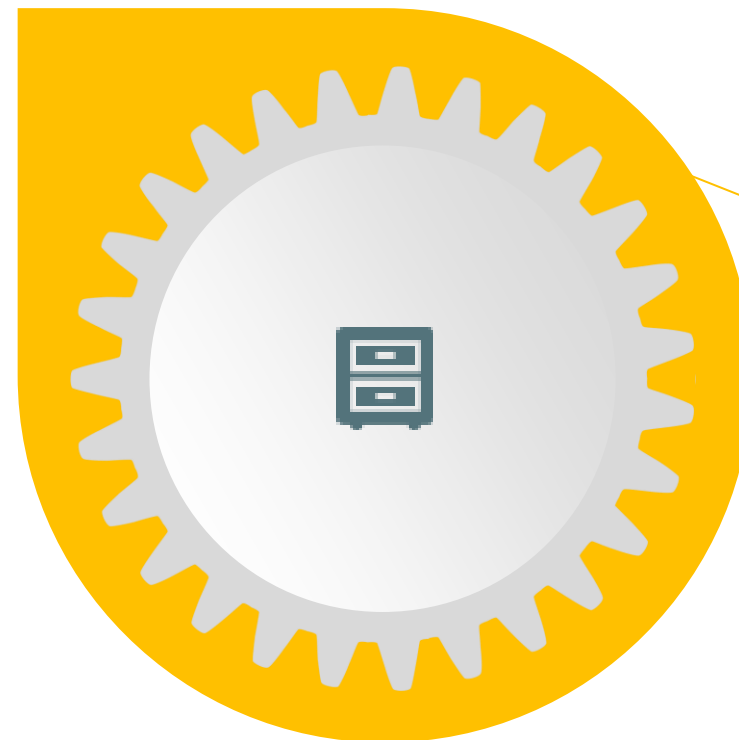
## VIP access

VIP access to the beef judging ring. Free student interpreters & guided tours of the show.



## Infrastructures

Catering, bar, meeting room, prayer room, unlimited internet access, shuttle buses...





**SOMMET  
DE L'ÉLEVAGE**

## **International Livestock Gala Evening**

Presentation of all French breeds to  
foreign delegations.  
**Wednesday 2 October**  
18.00 – 20.00 – Zenith cattle ring

## **Farm visits**

**35 farm & agro-industrial site visits  
available during the show.**  
A complete insight into French  
breeding excellence!



# Farm visits: **THE** added-value of the **SOMMET DE L'ELEVAGE**

**Unique in the world!** Every year, more than 1,000 international visitors participate in our programme of 35 farm and agro-industrial site visits

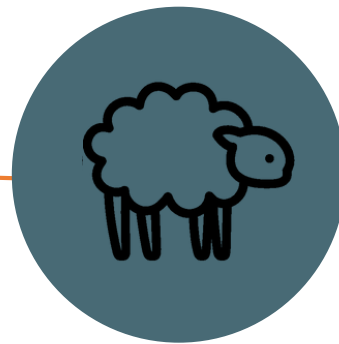
1-2-3-4  
October 2024



Dairy



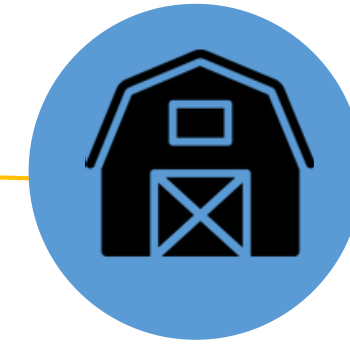
Beef



Sheep &  
goats



Salers  
breed



**Industrial sites**  
Cheese processors, abattoirs, biogas,  
laboratories, etc.



# International Livestock Gala Evening



**Wednesday 2 October**  
**Zenith beef ring, 18.00-20.00**

**Presentation to foreign visitors of French cattle, sheep, goat and horse breeds present at the show.**

(Simultaneous English translation)

The gala will close with a cocktail reception to which all foreign visitors are most welcome.

**GUARANTEED ENTERTAINMENT!**

# The SOMMET DE L'ELEVAGE

is a showcase for the excellence of French breeding, in terms of

## Breeder organisations

The organisations and know-how of French breeders is known and acknowledged throughout the world. The SOMMET is their showcase.

## Breeds and genetics

The SOMMET is Europe's #1 livestock show. 2,000 animals representing 70 breeds in judging. The Massif central is also the heartland of many French breeds exported throughout the entire world.

## Sustainability and sale of livestock production

The SOMMET offers an exceptional showcase for French expertise in animal production, genetics and the processing of products within a sustainable grassland system.

## Machinery, equipment and services

The SOMMET is a showcase for the materials, equipment and services that farmers need. It's the unmissable event for all livestock farmers. **A giant agricultural supermarket!**



# WELCOME

 **SOMMET  
DE L'ÉLEVAGE**  
WORLD'S #1 SUSTAINABLE LIVESTOCK SHOW



**1 > 4 OCT. 2024**  
CLERMONT-FERRAND ★ FRANCE  
**1,700 exhibitors • 115,000 visitors • 2,000 animals**

[sommen-elevage.fr](http://sommen-elevage.fr)  
     



# SEE YOU THERE !

**1 > 4 October 2024**  
**Clermont-Ferrand / FRANCE**

## Contact:

Mr Süleyman BEZİRGAN  
International Responsible  
[s.bezircan@ifcm.com.tr](mailto:s.bezircan@ifcm.com.tr)  
+90 555 563 50 56 (WhatsApp)

Mr Benoit DELALOY  
International Manager  
[bdelaloy@sommet-elevage.fr](mailto:bdelaloy@sommet-elevage.fr)  
+33 6 70 28 38 14 (WhatsApp)

**[www.sommet-elevage.fr](http://www.sommet-elevage.fr)**



# SOMMET DE L'ÉLEVAGE

**WORLD'S #1 SUSTAINABLE  
LIVESTOCK SHOW**